

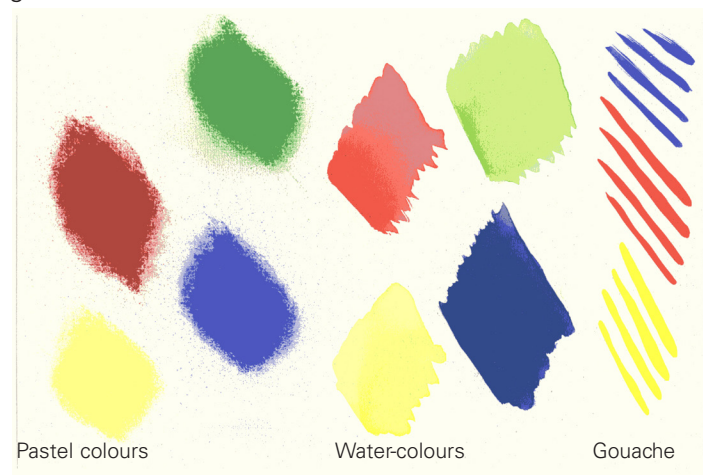
Schmincke pastel primer - for a new kind of individual priming of substrates for pastel painting

The **pastel primer** (50 503, in 500 ml) suits perfectly for priming individual painting substrates. No matter which substrate you prefer: canvas, canvas boards or art boards. You are now in the position to produce your own painting substrate for pastels and charcoal. The acrylic based primer is light resistant and provides an opaque surface.



Properties:

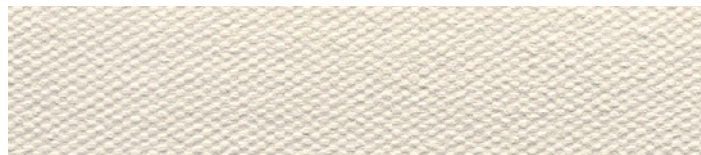
The fast-drying primer can be applied on non-absorbent and grease-free surfaces such as wood, canvas and paper (> 300 g/m²). The dry surface is light-grey and is rough enough to provide a good hold for the pastel colours. After having dried, the primed surface is not only suitable for art works with pastels but also for water-colours, acrylic and gouache colours.



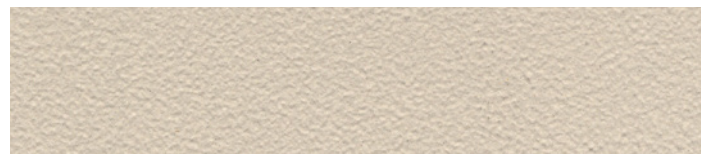
Application:

The pastel primer is ready for use and can be applied with a brush or a lacquer roll. For the application with a brush, we recommend to add 10 % water. We also advise to apply 2-3 layers. Each layer should have dried before applying the next one.

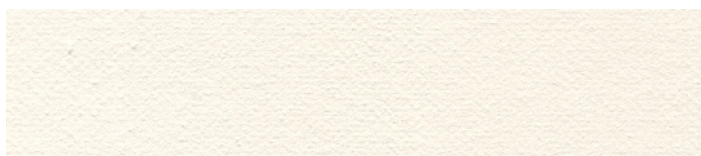
Examples:



Pastel primer applied on canvas



Pastel primer applied on art board



Pastel primer applied on a painting board

TIP:

You can use Schmincke acrylic colours **PRIMAcrlyl® Finest Artists' Acrylic** and **AKADEMIE® Acryl color** for colouring the pastel primer. You can mix the colour with the pure primer in order to obtain either monochrome coloured substrates or even multi-coloured ones which will have a fascinating effect on the art works with pastels, water-colours, gouache or acrylics.



Pastel primer - coloured with acrylics

Last but not least:

Do not forget to use a fixative for your pastel art work. We recommend the Schmincke Pastel Fixative (50 402) or Schmincke Universal Fixative (50 401).



The described product attributes and application examples have been tested in the Schmincke laboratory. The information is based on our current state of technical findings and experience. Due to the diversity of applications in terms of painting techniques, materials and working conditions, as well as numerous possible influences, this information is based on a general application range. A legally binding guarantee of specific attributes or the suitability for a specific usage purpose cannot be derived from our information; therefore the use of the products must be adapted to the users' individual conditions and tested in trials. For this reason, we cannot provide a warranty for product attributes and/or assume liability for damages that occur in connection with the use of our products.

By the way: Specifics for handling and product safety you will find on our website www.schmincke.de (e.g. download/safety data sheets).

For special questions please don't hesitate to ask our team in the lab!
The best way to get in contact with them is via mail at:
laborteam@schmincke.de.