

The basic assortment AERO COLOR® Professional (81 108) -

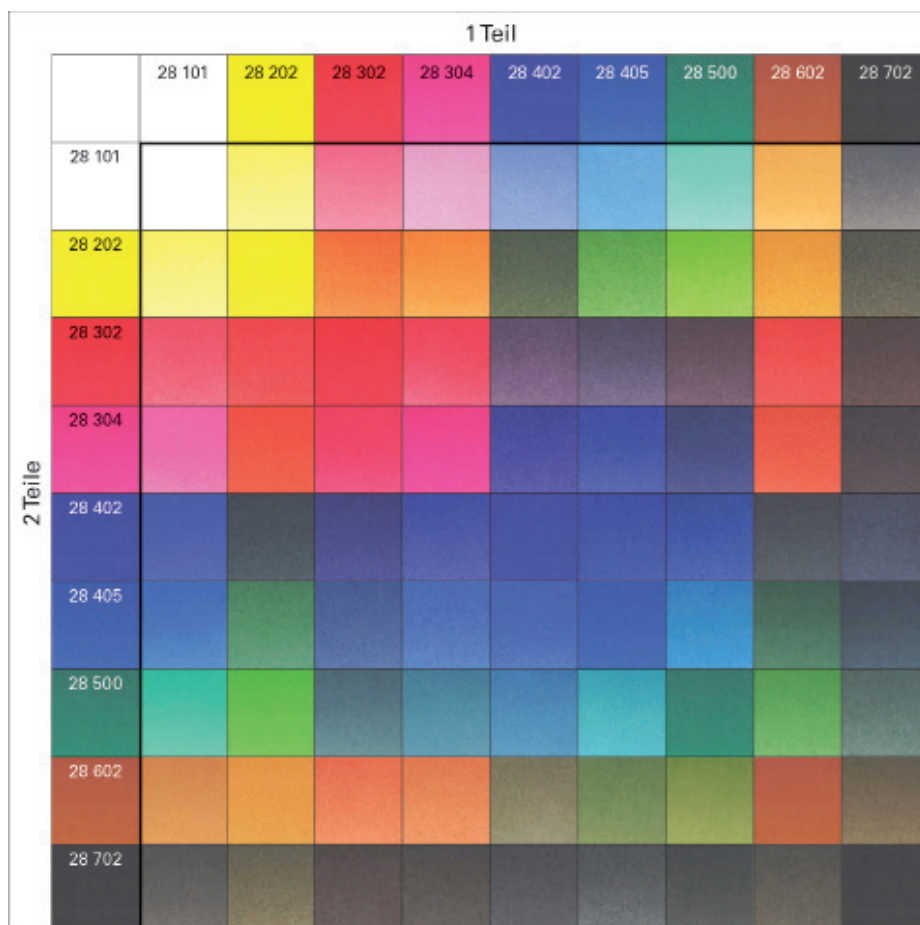
Variable mixing possibilities for airbrush- and liquid acrylic techniques

The basic assortment box (81 108) contains 9 brilliant, liquid shades **AERO COLOR® Professional** and is the main basis for all airbrush works, acrylic painting (similar to water-colour painting), mixing techniques and many others. All 9 shades are very brilliant, lightfast and can be used pure, thinned with water and can also be mixed among each other. If you mix all shades with each other, you get a very large range of brilliant colours.

The following diagram shows only a choice of mixing possibilities, which can further be extended. With the pipette bottle it is easy to dose the colour very accurately. Mixing ratios can be achieved as the colour can be analyzed down to the drops and then be mixed accordingly. Due to the high quality of the pigments and the purity of the single colours the brilliance of the colours in mixtures is still perfect.

Explanation of the mixing diagram

For the diagram all 9 shades have been applied pure (horizontal axis) and after that mixed with every other shade (vertical axis). The mixing ratio of this example is approx. 2:1. That means that the shades of the horizontal axis (1 portion i.e. 1 drop) are mixed with the shades of the vertical axis (2 portions i.e. 2 drops). The result are 72 new shades !



Many other colour variations arise, if you change the mixing ratio: 3:1, 4:1 but also 10:1 – that means that there are no limits in colour mixing! Furthermore each mixed colour can additionally be lightened in steps or adjusted to be more opaque with SUPRA white, opaque (28 101). Thus, are also

many new variations possible from slightly lightened shades to soft pastel shades. The basic **AERO COLOR® Professional** assortment provides a very rich colour range for airbrush and acrylic compositions in brilliant colour quality.

The described product characteristics and example applications have been tested at the Schmincke laboratory. The information is based on the technical knowledge and experience which are presently available to us. In view of the diversity of applications with regard to painting techniques, materials and working conditions and the numerous possible influencing factors, the information refers to general areas of application. The information provided here does not constitute a legally binding warranty of specific characteristics or of suitability for a specific application; use of the products is thus to be adapted to the user's special conditions and checked by preliminary tests. We are thus unable to guarantee product characteristics or accept any liability for damage arising in connection with the use of our products.

For your information:

For more details regarding health and safety please refer to:
[www.schmincke.de/ Download/ Safety Data Sheets](http://www.schmincke.de/Download/SafetyDataSheets).

In case of further special technical questions, please contact the Schmincke LAB-Team at laborteam@schmincke.de or by phone +49-211/2509-476.